

# WESTLAKE CENTER MEDICAL OFFICE

3180 Willow Lane, Thousand Oaks, California



Click Here for  
**Property Tour**



**ERIC NISHIMOTO**

818.444.4984  
enishimoto@lee-re.com  
ericnishimoto-re.com  
License ID# 01462339

[www.westlakevillagemedicaloffice.com](http://www.westlakevillagemedicaloffice.com)





Westlake Center  
3180 Willow Lane, Thousand Oaks, CA

MEDICAL OFFICE SPACE  
AVAILABLE FOR LEASE



### LEASING TERMS

**Lease Rate:** \$3.40 per SF Modified Gross (E+J)

**Term:** 3-10 Years

**Parking:** 5/1000 Free Surface

### AVAILABILITY

Suite #	Size	Rate	Availability
Suite 204	1,182 RSF	\$3.40/RSF MG+E+J	30 Days
Suite 206	806 RSF	\$3.40/RSF MG+E+J	60 Days
Suite 204/206	1,988 RSF	\$3.40/RSF MG+E+J	60 Days

### PROPERTY HIGHLIGHTS

- Newly Remodeled Medical Office
- Highly Desirable Medical Suite Location
- Professionally Managed
- Convenient Access to US-101 Freeway
- Impressive Common Area Lobby & Modern Restrooms
- Diverse Mix of Medical Practices
- Abundant Free Surface Parking



Westlake Center  
3180 Willow Lane, Thousand Oaks, CA

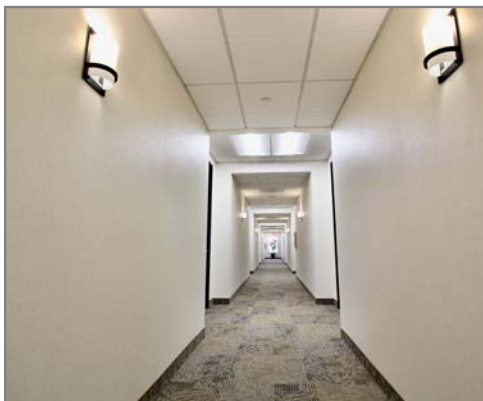
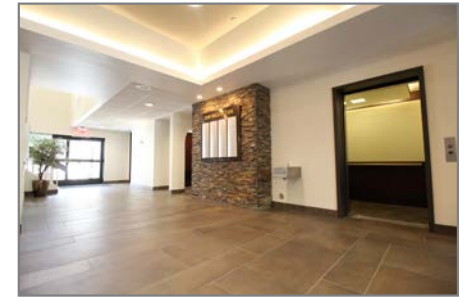
MEDICAL OFFICE SPACE  
AVAILABLE FOR LEASE

BUILDING PHOTOS

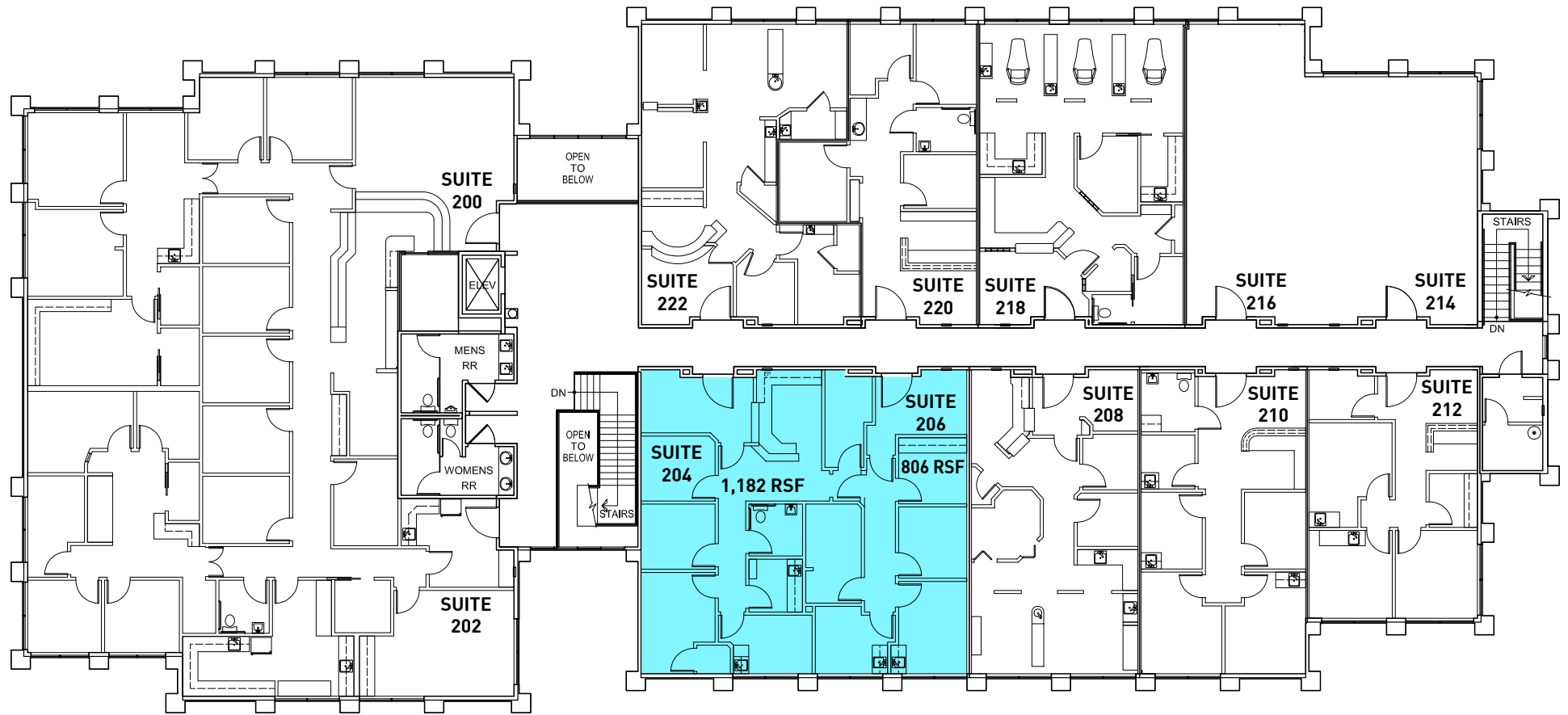




INTERIOR PHOTOS



SECOND FLOORPLAN



NOT TO SCALE



Westlake Center  
3180 Willow Lane, Thousand Oaks, CA

MEDICAL OFFICE SPACE  
AVAILABLE FOR LEASE

## LOCAL AMENITIES



For more information please contact:

**ERIC NISHIMOTO**  
818.444.4984  
enishimoto@lee-re.com  
ericnishimoto-re.com  
License ID# 01462339

[www.westlakevillagemedicaloffice.com](http://www.westlakevillagemedicaloffice.com)



COMMERCIAL REAL ESTATE SERVICES

No warranty or representation is made to the accuracy of the foregoing information. Terms of sale or lease and availability are subject to change or withdrawal without notice.

Lee & Associates® - LA North/Ventura, Inc. • Corporate ID #01191898  
A Member of the Lee & Associates® Group of Companies  
5707 Corsa Ave, Suite 200, Westlake Village, CA 91362 • P:818.223.4388 F:818.591.1450  
[www.lee-associates.com](http://www.lee-associates.com)