

NEW OWNERSHIP

PURCHASE OPTION AVAILABLE | CALL AGENT FOR DETAILS



**LOS ROBLES
MEDICAL
PARK**

301-343 S. MOORPARK ROAD
THOUSAND OAKS, CA

WWW.CONEJOMEDICAL.COM



LEE & ASSOCIATES
COMMERCIAL REAL ESTATE SERVICES
Corporate ID #01191898

DIRECT ACCESS TO SUITES FROM PARKING LOT | NO ENCLOSED COMMON AREAS

LOS ROBLES MEDICAL PARK

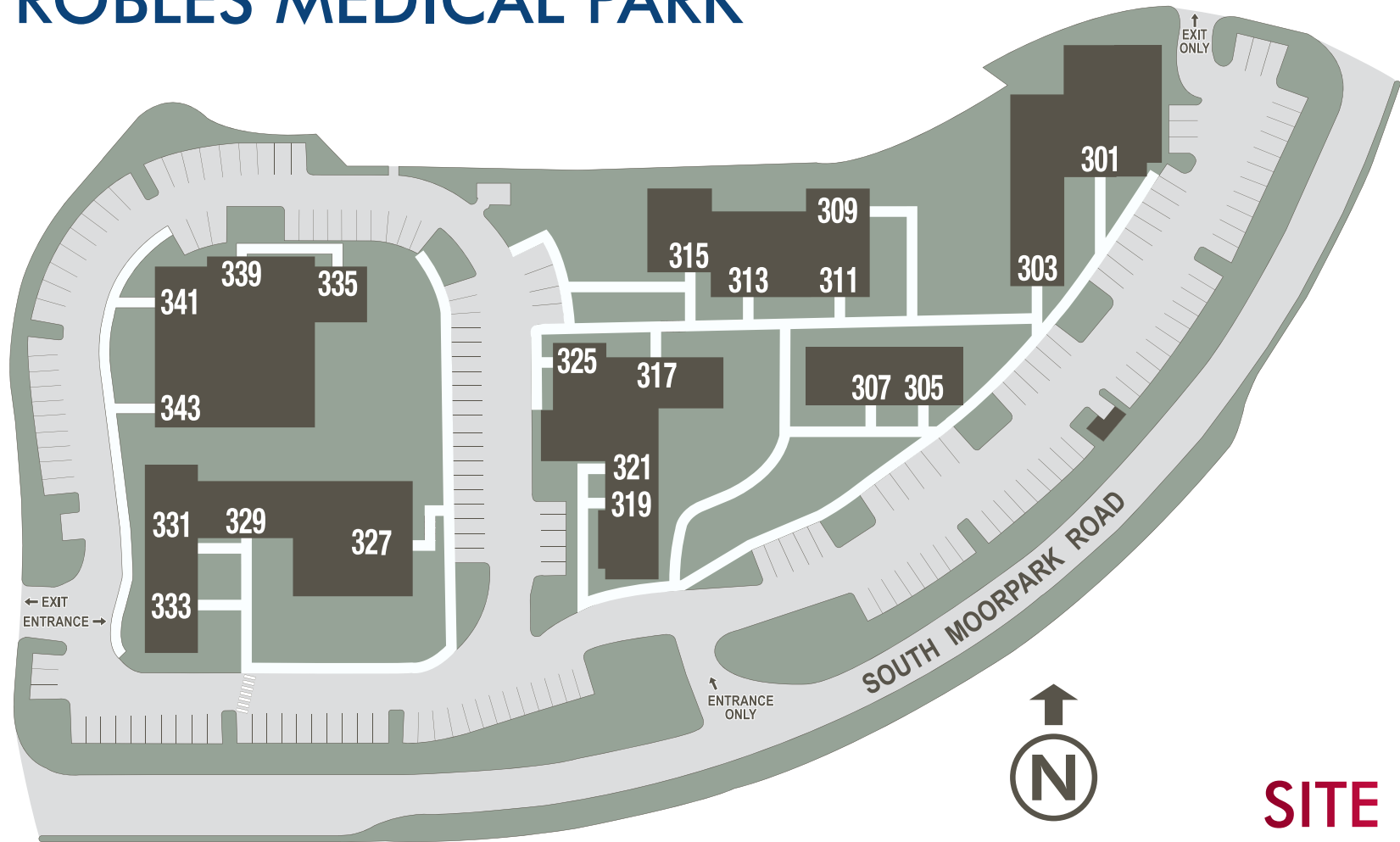


PROPERTY HIGHLIGHTS

- Beautiful garden medical complex situated among mature oak trees.
- Comprehensive interior and exterior renovation underway including new building facades, landscape themes, and new direction signage.
- Free standing buildings with efficient floor plans.
- Prominent building signage.
- Well located in the heart of Thousand Oaks, adjacent to restaurants, banking, and the Ventura (101) Freeway.
- Abundant windows and high ceilings.
- Easy to find location.
- Direct access to suites from parking lot.
- 3.5 Miles to Los Robles Hospital and Medical Center.

 [Click Here for Property Tour](#) 

LOS ROBLES MEDICAL PARK



SITE PLAN

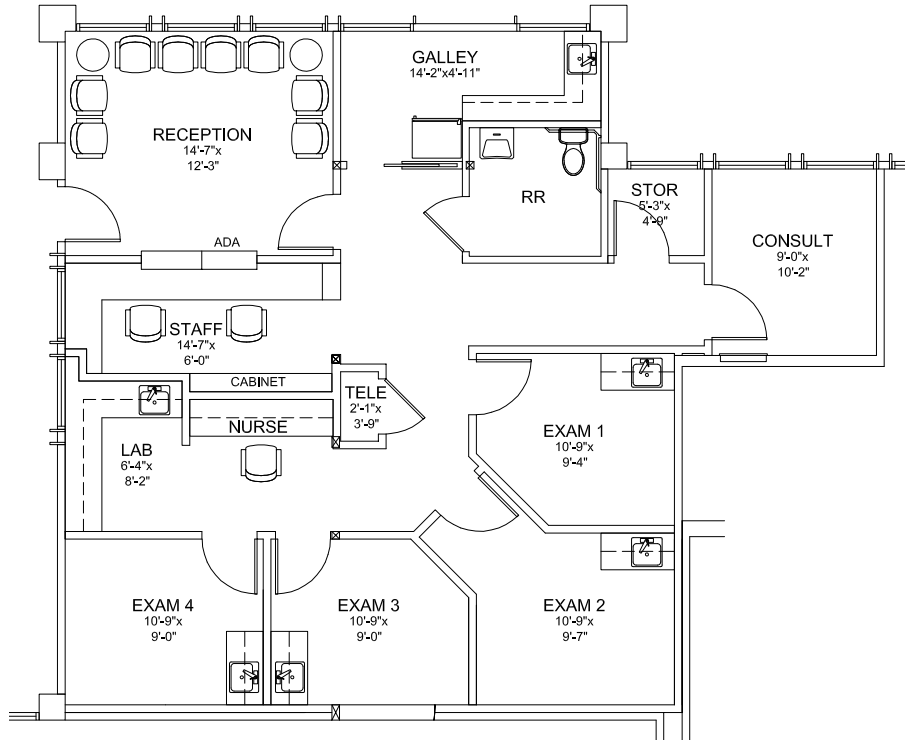
AVAILABILITY

MEDICAL OFFICE SUITES FOR LEASE

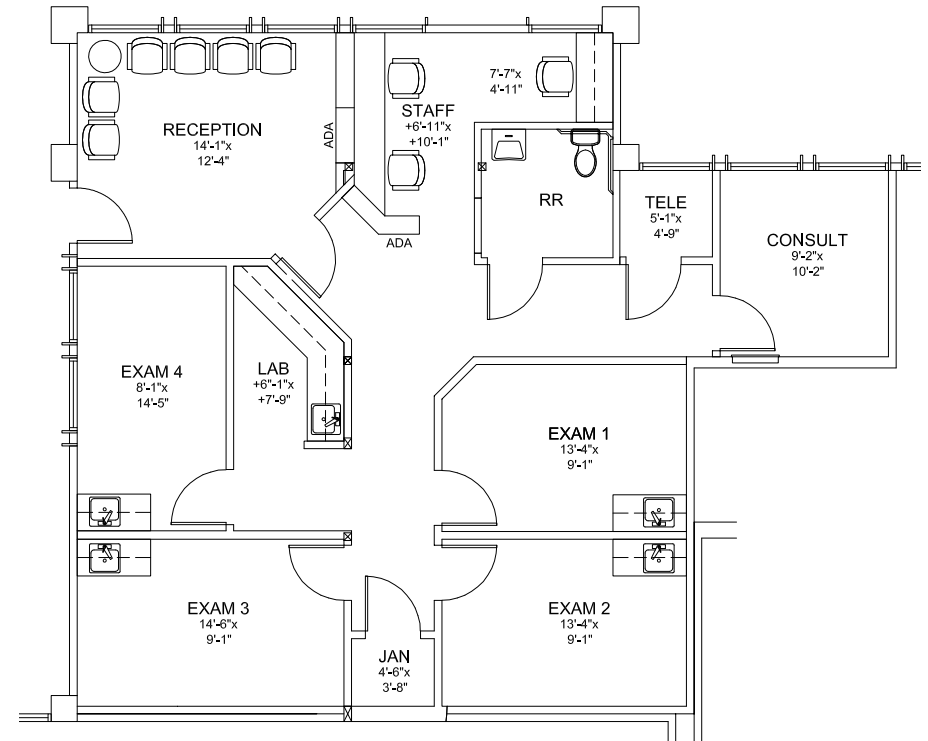
SUITE	SIZE	LEASE RATE
325A	1,498 Square Feet	\$3.15 MG + U&J
327	4,865 Square Feet	\$3.15 MG + U&J
327 (Divisible)	1,033 – 2,516 Square Feet	\$3.15 MG + U&J

LOS ROBLES MEDICAL PARK

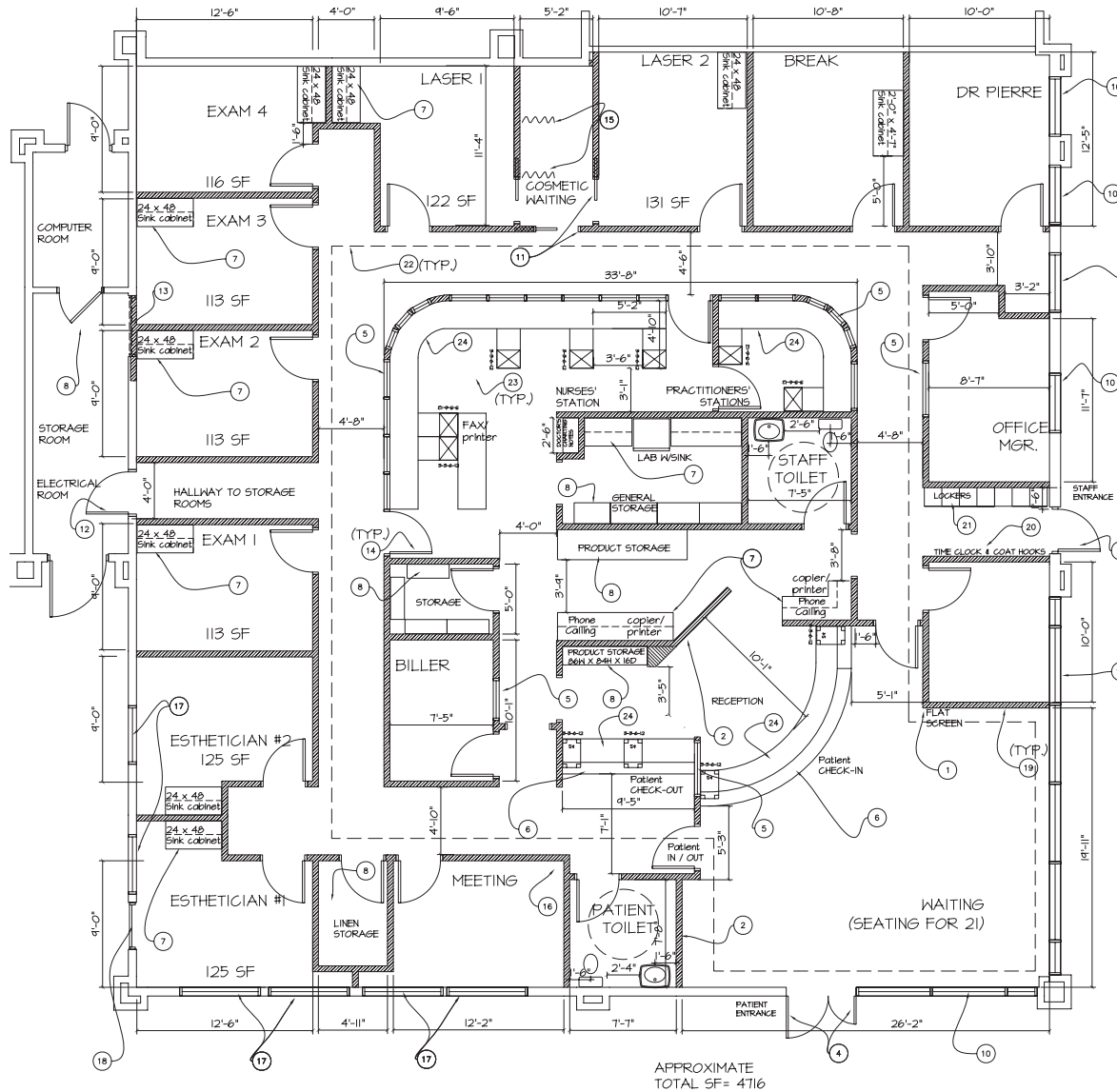
SUITE 325A SP-1



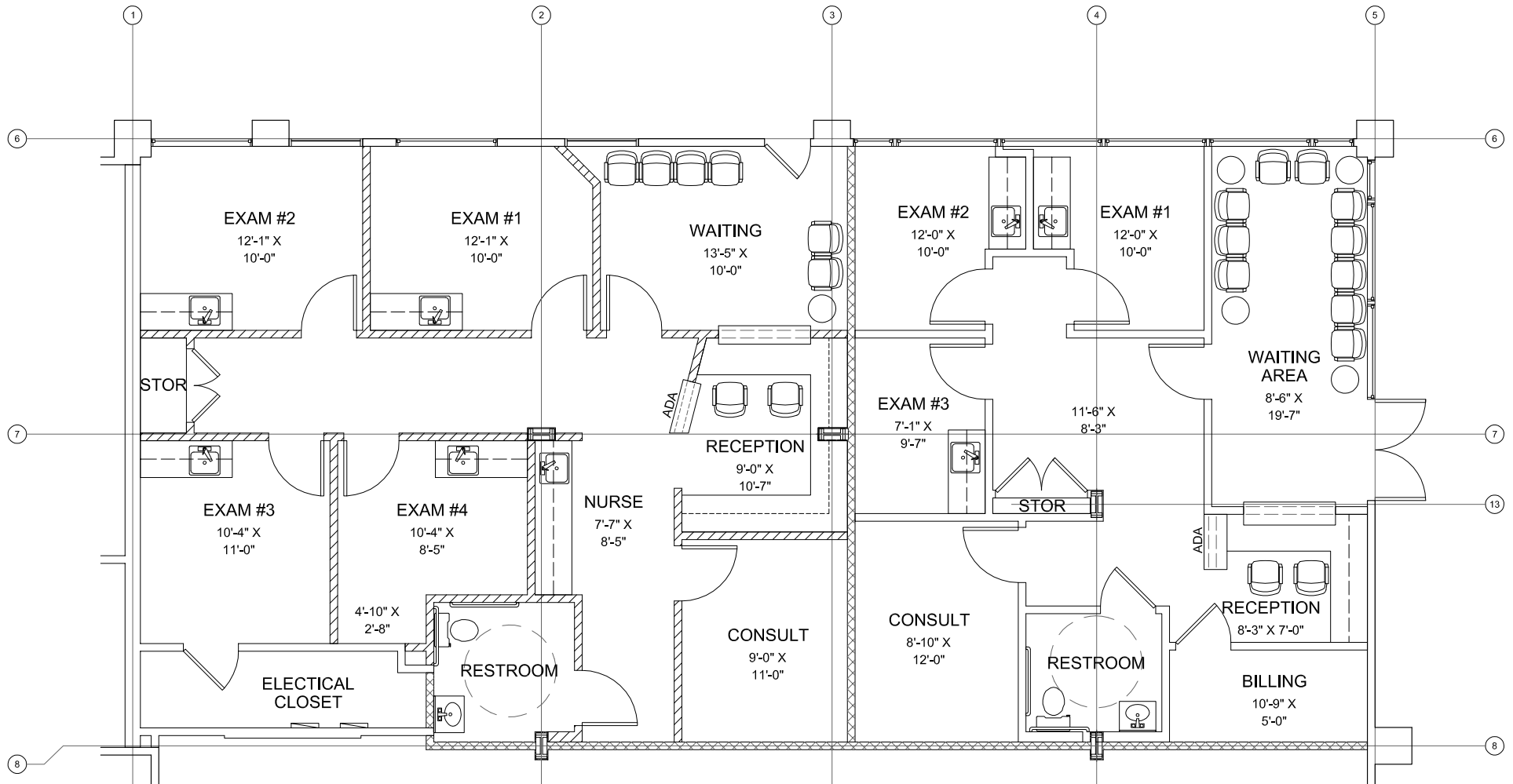
SUITE 325A SP-2



LOS ROBLES MEDICAL PARK



LOS ROBLES MEDICAL PARK



CONCEPTUAL FLOORPLAN
SUITE | A1 (1,316 SF) &
327 | A2 (1,033 SF)

LOS ROBLES MEDICAL PARK



CONTACT

ERIC NISHIMOTO, Associate

Lee & Associates® - LA North/Ventura, Inc.
 818-444-4984
 enishimoto@lee-re.com
 License ID #01462339

Lee & Associates® - LA North/Ventura, Inc. • Corp. #01191898
 A Member of the Lee & Associates® Group of Companies
 1000 Town Center Dr., Suite 310, Oxnard, CA 93036
 www.lee-associates.com

No warranty or representation is made to the accuracy of the foregoing information. Terms of sale or lease and availability are subject to change or withdrawal without notice.