

AGOURA HILLS PLAZA

28035 Dorothy Drive • Agoura Hills, California

Westlake and Calabasas Adjacent



ERIC NISHIMOTO

818.444.4984

enishimoto@lee-re.com

License ID #01462339

LEE & ASSOCIATES

COMMERCIAL REAL ESTATE SERVICES

No warranty or representation is made to the accuracy of the foregoing information. Terms of sale or lease and availability are subject to change or withdrawal without notice.



LEASING TERMS

- Available:** Move-In Condition
- Rent Type:** Modified Gross (Plus electricity & janitorial)
- Lease Term:** 1-10 Years
- Parking:** Up to 2/1000 RSF Free Parking

AVAILABILITY

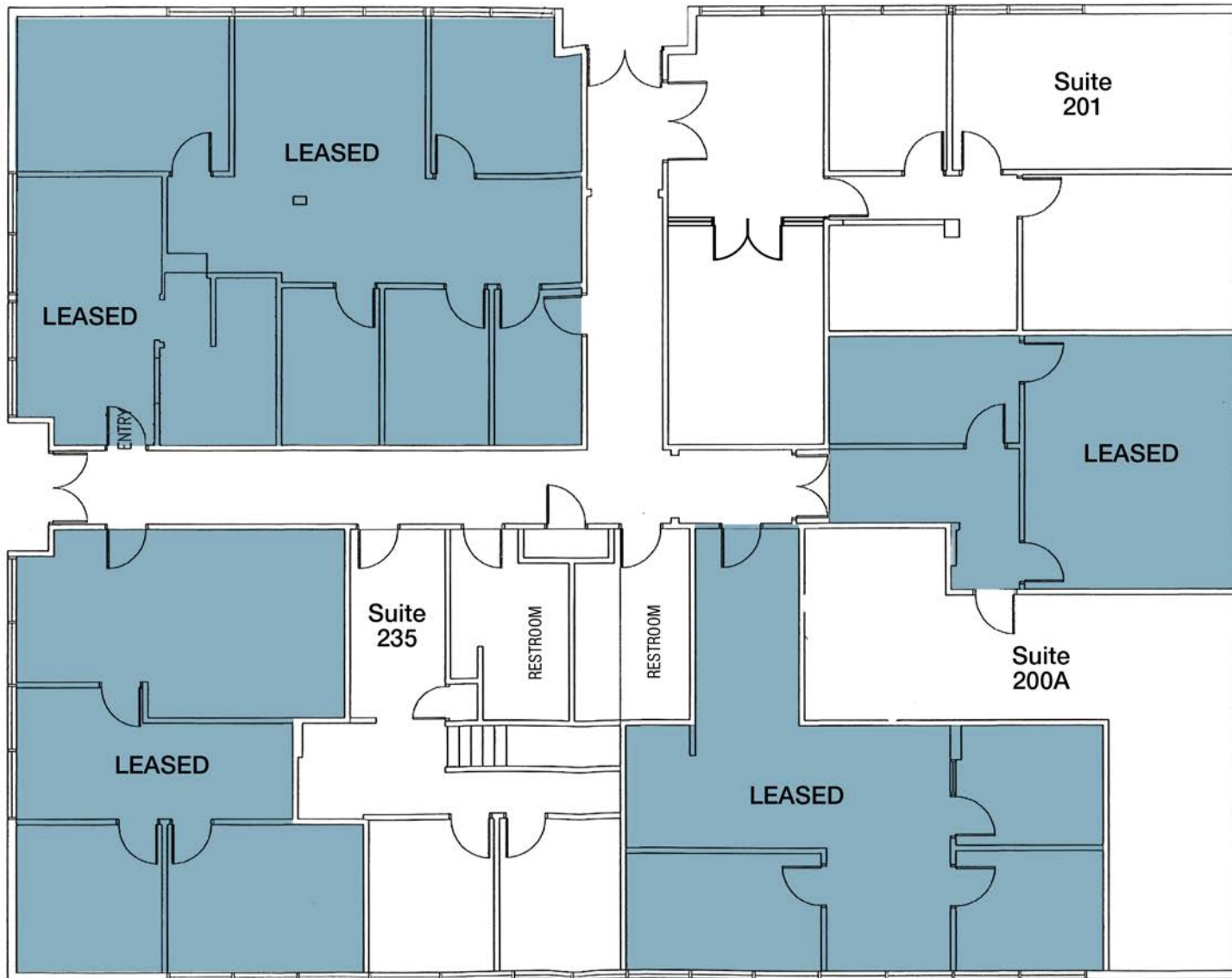
SUITE	RENTABLE SQ. FT.	RENT/MO.	AVAILABILITY
Suite 200A	795 RSF	\$1,050 per Mo.	VACANT
Suite 201	1,400 RSF	\$1.75 per RSF	VACANT
Suite 235	925 RSF	\$1.00 per RSF*	VACANT

*\$1.00 per RSF per month first 6 months of lease term. Three year minimum lease required.
 \$1.35 per RSF per month for months 7-12 with three percent annual escalations.
 \$.20 per RSF for electricity.*

PROPERTY HIGHLIGHTS

- Professional Office Building
- Adjacent to Westlake Village and Calabasas
- Surface Parking
- Flexible Floor Plans
- Retail Amenities within Close Proximity
- Amazing Views of the Santa Monica Mountains
- Easy Access to Ventura Freeway (US 101)
- Monument Signage Available (2,000 square foot minimum)

FLOORPLAN



AMENITIES AERIAL



Ralphs **VONS** **CVS pharmacy** **RITE AID** **UPS**

Starbucks **Maruca's** **Pizza Hut** **CHASE** **WELLS FARGO** **GNC**

Carls Jr. **TACO BELL** **BR** **UnionBank** **GREAT CLIPS**

citibank **Bank of America**

SUBJECT
AGOURA HILLS PLAZA
 28035 Dorothy Drive
 Agoura Hills, CA

Ralphs **BARNES & NOBLE** **WHITE WILLIAMS-SONOMA** **BLACK** **RITE AID** **BABIES'R US**

Starbucks **COFFEE** **Starbucks** **Starbucks** **Starbucks** **Starbucks**

Public Storage **EDWARDS THEATRES** **USbank** **CHASE** **ROSTI**

THE COMMONS at Calabasas

TRADER JOE'S **Habit BURGER GRILL** **HOMWOOD SUITES** **Do-it center** **DEGENCY THEATRES** **ISLANDS**

Reads FURNITURE **YAMATO** **FARMERS** **the Canyon** **verizon** **FARMERS** **McDonald's** **Domino's**

Agoura Hills Stadium & Theaters **NUMERO UNO** **Allstate** **PRIME STEAKHOUSE** **U-STORE-IT**

TUTOR TIME **jiffylube** **ETHAN ALLEN** **Sit'n Sleep** **State Farm**

WOOD RANCH **TREEHOUSE** **LA-Z-BOY** **Urbane Cafe** **M. FREDRIC** **U-HAUL**

Albertsons **erewhon** **UPS** **TACO BELL** **Good Nite Inn**

Savon drugs **SHARKY'S** **GNC LiveWell** **SUBWAY**

Jersey Mike's **McDonald's** **Jack** **Starbucks** **7-Eleven**

For more information please contact:

ERIC NISHIMOTO
 818.444.4984
 enishimoto@lee-re.com
 License ID #01462339

LEE & ASSOCIATES
 COMMERCIAL REAL ESTATE SERVICES

Lee & Associates® - LA North/Ventura, Inc. • Corporate ID #01191898
 A Member of the Lee & Associates® Group of Companies • www.lee-associates.com
 1000 Town Center Dr., Suite 310, Oxnard, CA 93036 • P:805.626.1200 F:805.413.7000
 5707 Corsa Ave, Suite 200, Westlake Village 91362 • P:818.223.4388 F:818.591.1450

No warranty or representation is made to the accuracy of the foregoing information. Terms of sale or lease and availability are subject to change or withdrawal without notice.