

ROYAL MEDICAL PLAZA

2045 Royal Avenue, Simi Valley, CA

MEDICAL/OFFICE SPACE
FOR LEASE



ERIC NISHIMOTO

818.444.4984

enishimoto@lee-re.com

DRE# 01462339

simivalleymedicaloffice.com

 **LEE &
ASSOCIATES**

COMMERCIAL REAL ESTATE SERVICES

No warranty or representation is made to the accuracy of the foregoing information. Terms of sale or lease and availability are subject to change or withdrawal without notice. Corp ID: #01191898

ROYAL MEDICAL PLAZA

2045 Royal Avenue, Simi Valley, CA

MEDICAL/OFFICE SPACE FOR LEASE



AVAILABLE SUITES

- Suite 110: 1,168 Rentable Square Feet
- Suite 210: 1,385 Rentable Square Feet
- Suite 216: 1,152 Rentable Square Feet
- Suite 221: 1,870 Rentable Square Feet
- Rate: \$2.35 SF MG (E+J)

BUILDING HIGHLIGHTS

- Common Area Restrooms
- Major Interior & Exterior Renovations Recently Completed
- New Elevator
- AT&T Fiber Optic Served
- Shallow Bay Depths Provides Abundant Window Line
- Professionally Managed
- 2.7 Miles to Simi Valley Hospital
- Tenant Mix Consists of Medical and Office Users

ROYAL MEDICAL PLAZA

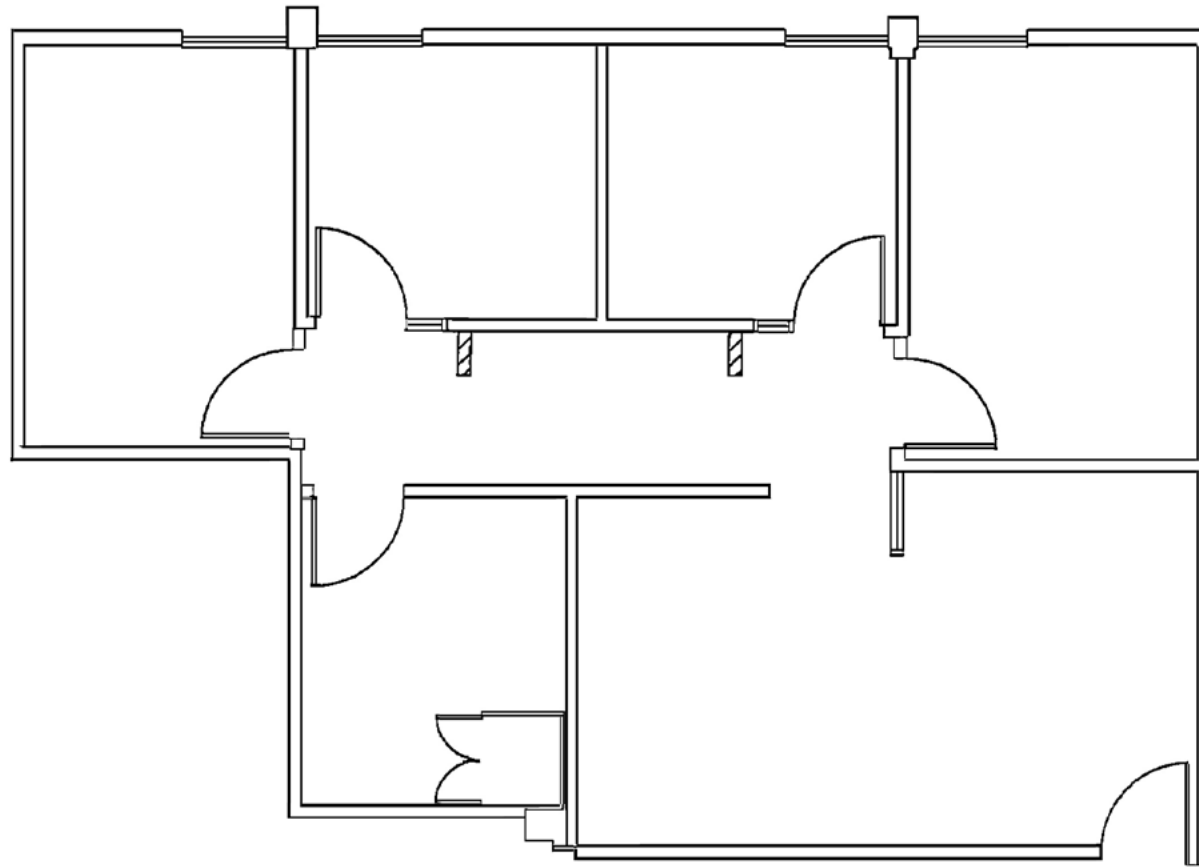
2045 Royal Avenue, Simi Valley, CA

MEDICAL/OFFICE SPACE FOR LEASE

2045 ROYAL AVENUE • BUILDING EXTERIOR



FLOOR PLAN • SUITE 110



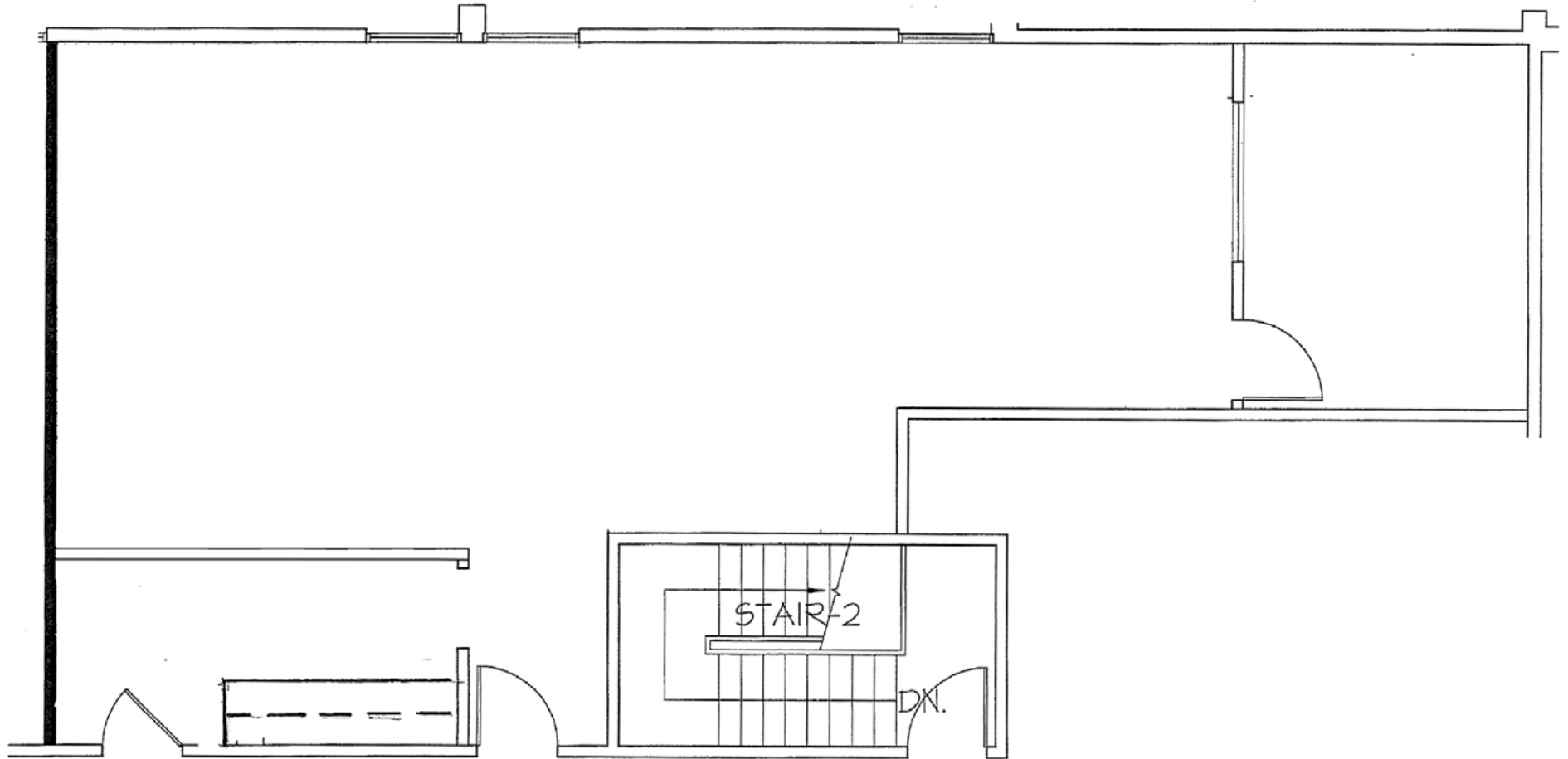
NOT TO SCALE

ROYAL MEDICAL PLAZA

2045 Royal Avenue, Simi Valley, CA

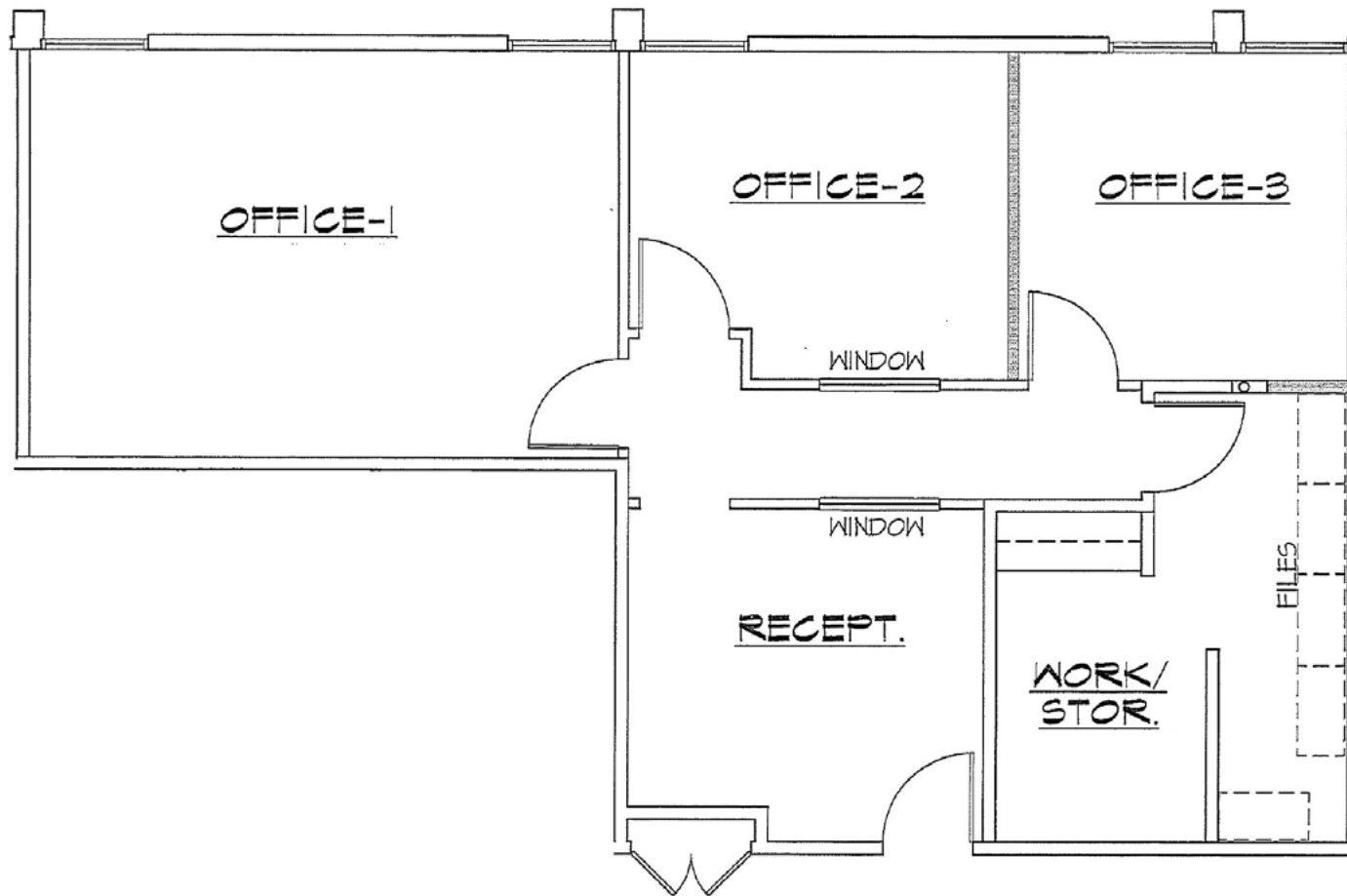
MEDICAL/OFFICE SPACE FOR LEASE

FLOOR PLAN • SUITE 210



NOT TO SCALE

FLOOR PLAN • SUITE 216



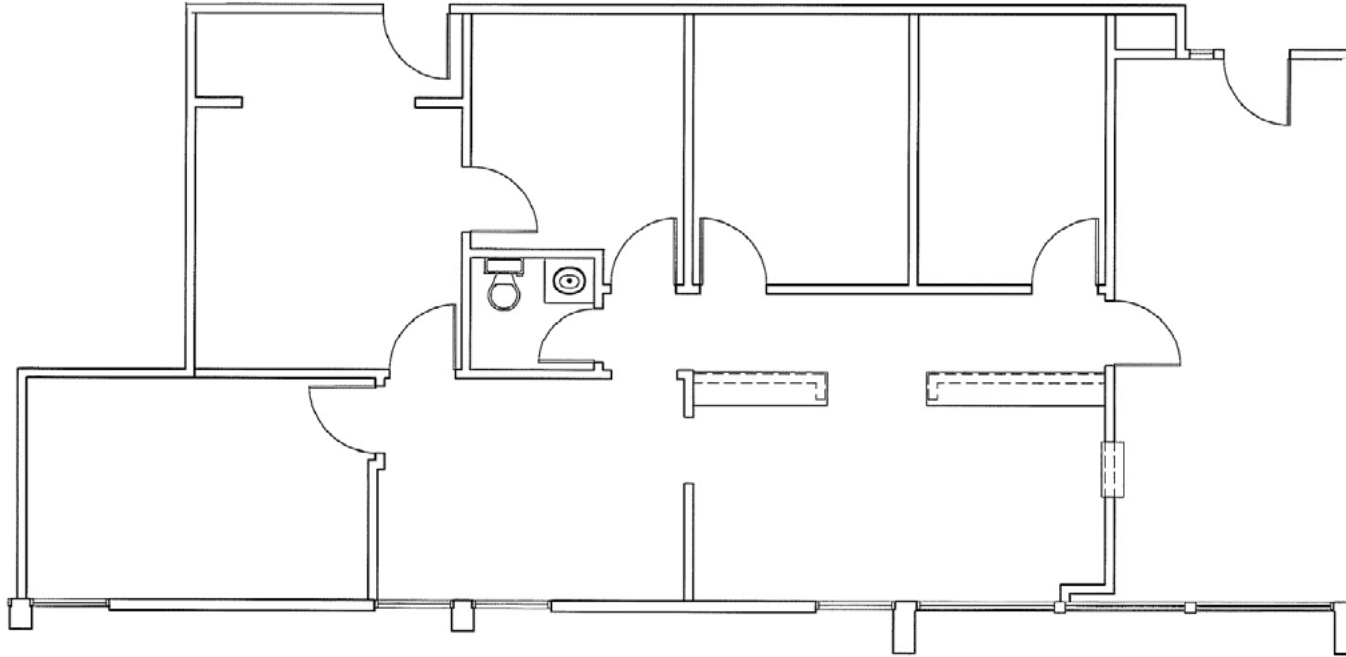
NOT TO SCALE

ROYAL MEDICAL PLAZA

2045 Royal Avenue, Simi Valley, CA

MEDICAL/OFFICE SPACE FOR LEASE

FLOOR PLAN • SUITE 221



NOT TO SCALE

ROYAL MEDICAL PLAZA

2045 Royal Avenue, Simi Valley, CA

MEDICAL/OFFICE SPACE FOR LEASE

LOCAL AMENITIES



For more information
please contact:

ERIC NISHIMOTO

818.444.4984

enishimoto@lee-re.com

ericnishimoto-re.com

DRE# 01462339

simivalleymedicaloffice.com



COMMERCIAL REAL ESTATE SERVICES

Lee & Associates® - LA North/Ventura, Inc.

Corporate ID #01191898

A Member of the Lee & Associates®

Group of Companies

5707 Corsa Ave., Suite 200

Westlake Village, CA 91362

P:818.223.4388 F:818.591.1450

use and availability are subject to change or